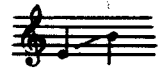


ВЕРБОВАЯ ДОЩЕЧКА

Украинская народная песня

Обработка Н. Дремлюги



Подвижно

нар *p*

p

Вер-бо-ва-я до-щеч-ка, до-щеч-ка,

до-щеч-ка, по ній хо-дить На-стеч-ка, На-стеч-ка, На-стеч-ка.

росо cresc.

Де ти, На-стя, бу-ва-ла, бу-ва-ла, бу-ва-ла, як діб-ро-ва

росо cresc.

This system contains the first two lines of music. The top line is a vocal melody in G major, starting with a treble clef and a key signature of one sharp (F#). The lyrics are written below the notes. The piano accompaniment is in the same key and features a steady eighth-note bass line in the left hand and chords in the right hand. A dynamic marking of *росо cresc.* is placed above the piano part.

па-ла-ла, па-ла-ла, па-ла-ла?

This system contains the second two lines of music. The vocal line continues with the lyrics "па-ла-ла, па-ла-ла, па-ла-ла?". The piano accompaniment continues with similar rhythmic patterns and chordal support.

mf
Ре-ше-том во-ду но-си-ла, но-си-ла,

mf

This system contains the final two lines of music. The vocal line begins with a dynamic marking of *mf* (mezzo-forte) and continues with the lyrics "Ре-ше-том во-ду но-си-ла, но-си-ла,". The piano accompaniment also features a dynamic marking of *mf* and concludes with sustained chords in the right hand and a simple bass line in the left hand.

но_ си_ ла та й діб_ ро_ ву га_ си_ ла, га_ си_ ла, га_ си_ ла.

The first system consists of a vocal line in treble clef and a piano accompaniment in grand staff (treble and bass clefs). The key signature is one sharp (F#). The vocal line has lyrics: "но_ си_ ла та й діб_ ро_ ву га_ си_ ла, га_ си_ ла, га_ си_ ла." The piano accompaniment features chords and moving lines in both hands.

Вер_бо_ва_я

The second system continues the musical score. The vocal line has lyrics: "Вер_бо_ва_я". The piano accompaniment includes a *p* (piano) dynamic marking. The music features arpeggiated chords and sustained notes.

до_ щеч_ ка, до_ щеч_ ка, до_ щеч_ ка, по ній хо_ дить На_ стеч_ ка,

The third system continues the musical score. The vocal line has lyrics: "до_ щеч_ ка, до_ щеч_ ка, до_ щеч_ ка, по ній хо_ дить На_ стеч_ ка,". The piano accompaniment features sustained chords and arpeggiated figures.

На_ стеч_ ка, На_ стеч_ ка.

The fourth system concludes the musical score. The vocal line has lyrics: "На_ стеч_ ка, На_ стеч_ ка." The piano accompaniment includes a *pp* (pianissimo) dynamic marking and an 8-measure rest in the right hand.